



Volume 2 #2

CUPERTINO, CALIFORNIA 95014

October 1983



1983 SHIRLEY CONVENTION
Anderson, South Carolina



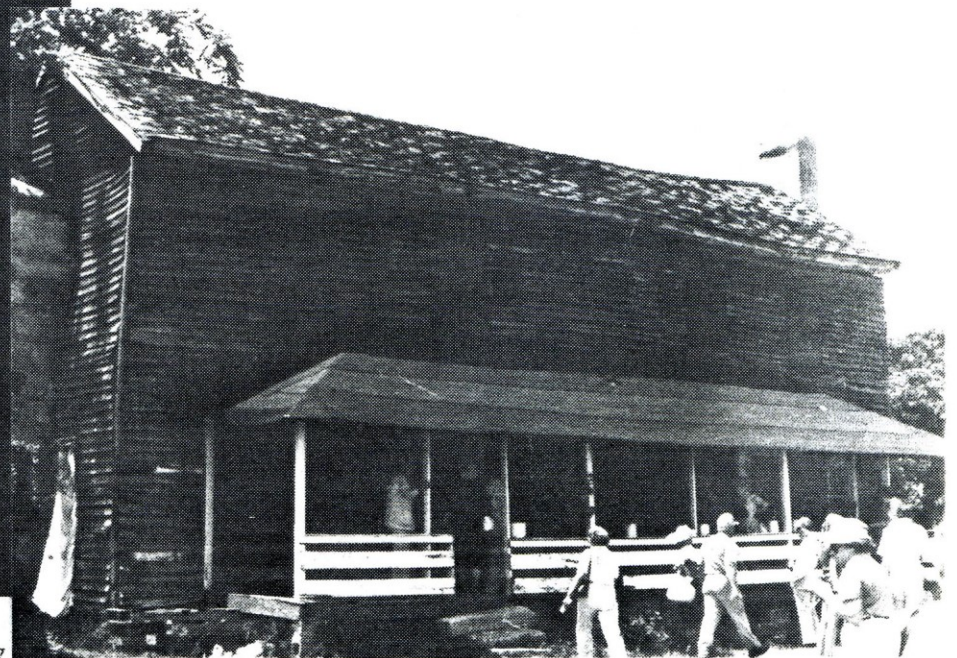
TURKEY CREEK BAPTIST CHURCH



Honea Path Baptist Church



Stained Glass window dedicated to the memory of Obediah Shirley in the Honea Path Baptist Church



OBEDIAH SHIRLEYS HOUSE

About 150 Shirley descendants met at the 4th SHIRLEY CONVENTION in Anderson, South Carolina on July 9 and 10th. We all had a great time and it came to an end all too quickly. I would have loved to have stayed around several more days. But...with husband who thinks 2 days is too long, what can I say! Next time maybe I'll leave him home and we'll just have a WORKSHOP and stay longer. This we might plan on in 1985, perhaps in the Indiana area. I am considering going to England this May instead of May 1985. I think it is going to take a lot more planning to really get this large event co-ordinated. We want to get the English Shirleys involved in this too! If we do have a workshop in 1985, we can give more details about the SHIRLEY CELEBRATION and etc. We'll see how this works out.

We met several new Shirley descendants in South Carolina. One was Lydia Pinson Thomas. She took us to several places where Shirleys had lived.

Another lady was Jean Conselya who helped us find the TURKEY CREEK Church.

There were many new faces from all over the U.S. and what a treat to meet so many GREAT! people. I have not been disappointed yet with how great the Shirley people are. They are so friendly.

It was quite warm the afternoon we left to go visiting the area the Shirleys had lived. [It was a lot hotter the following weeks, so our timing was good]. We met in the convention room and there passed out SHIRLEY signs to put in the window of the cars so we would know we were together. We met in the parking lots in caravan style. After several minutes of preparation there we left with Lydia Pinson Thomas in the lead car. I rode with her and we had a nice talk about the Shirleys.

Our first stop was down a country lane to the house built about 1806 where Obediah Shirley lived, (see picture) When we pulled up a black lady and her children were sitting on the porch with several children standing nearby. I thought to myself, what is she going to think when she sees this large caravan of some 20-30 cars stopping at her house. She took it calmly. I almost had the feeling she might be expecting us. Everyone got out of their cars and swarmed the premises. She took it like it was nothing at all. The place was rather tidy and she told us it was fine to look in the house. People were everywhere. We went up the very old rickety stairs to the rooms upstairs. Some of us began to talk of concern that it may not be safe for so many to go up at once as the floors may not take the weight of so many people. So we scattered out. We thanked her and I slipped her a little money for her inconvenience. She seemed happy about the whole thing. Of course we had explained this house was built by a Shirley ancestor. She answered questions asked her about the place and seemed she enjoyed the excitement as much as we were enjoying being there.

We passed by several other places and stopped in Honea Path at the Baptist Church where Obediah (b. 1804 Abbeville Co. SC.) was a life long member. He was an elder and ardent church worker. A stained glass window in the Chapel has been dedicated to his memory. We visited the cemetery across the street and by this time we were getting to warm. I hurried to the store and got some ice and glasses so we could refresh ourselves with a cold drink.

We continued on from Honea Path with Jean Conselya and their group leading us to Turkey Creek Church. We found it with only slight trouble. What an experience it was for me to actually be standing on the land of TURKEY CREEK which I have been writing and studying about for the last several years. It was one of the highlights of the trip to me personally.

By now, we all getting tired and it was hot and we decided to get back to the

hotel. By the time we relaxed and cooled off, it would be just about dinner time. We missed some of the other Shirley related places. Time just ran out for me but I am sure those who descended from this group of South Carolina Shirleys continued on with their visits after my family left. I know several groups who got together for dinners etc. in homes of their relatives in the area. I would loved to have been with them but our family had a travel itinerary we had to keep. I would like to come to South Carolina on my own sometime to just sight see and visit all the Shirley places.

In the evening, after dinner, we all met back in the convention hall for a Shirley related surprise. I had not told anyone what it was going to be.....

We showed pictures of the SHIRLEY MANOR in England at Ettington Park. The slides were taken by Mr. & Mrs. Walter Shirley (my husbands cousin) last year. Mr. Franklin Shirley was our commentator, reading from a description I brought of the Shirley Manor which was sent to me a few years ago by Ruth Burrell. After the slide presentation, we discussed the upcoming trip to England. I asked by a show of hands how many were seriously considering making the trip. About three fourths of the audience raised their hands. It would appear we are going to have a large group going to England. How thrilling!

Sunday morning after breakfast, we continued with our subject, the Shirleys. We had a question and answer period by all those attending the convention. It was a time to tell about their own family and ask questions of one another.

[If we do have a workshop in Indiana or elsewhere in 1985, I would like to have facilities where we can have smaller rooms, one assigned to each branch of the Shirley family. Can someone in Indiana think of facilities where we could meet and it would be a reasonable price?].

I should mention our Saturday morning shedule.

I opened the Convention with a warm welcome to all of those attending. I was very tired as I had come down with a horrible cold after arriving in Washington D.C. a few days earlier. [Rented cars air-conditioner blew on me and that's how I caught the cold]. We made the best of it. I couldn't sleep very well and so got up about 3:00 O'clock and gathered all my material etc. and went to lobby and asked if they would let me in the convention room to get myself organized for the our meeting. She let me in and I posted somethings on the wall, wrote a few things on the blackboard and made notes of things to do. Before I knew it, the sun was up and a few people looked in the room to see where the meeting was to be. I went and had breakfast with my family, and then it was Convention time.

After the opening and sharing material etc. about the Shirleys, we asked for each one to stand and tell who they were and who their Shirleys were. After a coffee break, our guest speaker, Harold Travis Parker, who descends from John and Elizabeth Barmore Shirley branch, talked about this branch of Shirleys and followed by a question and answer period. After this it was lunch time. After lunch we went to Obediah Shirleys house and Honea Path and Turkey Creek Baptist Church and cemetary.

Friday evening many of met in the convention room and got acquainted with one another informally. I met some who could not attend the convention. Everyone was very friendly and chit chatting went on for quite some time.

There was a gentleman who was at the hotel lobby receptionist desk when I arrived in Anderson on Thurs. who was asking about the convention. I overheard his conversation and introduced myself to him, He had just heard about the convention and was unable to attend either. He did attend the Friday evening get together. I'd like to know who he was.

He thought he would get back from his meeting in time to join us late the next day. I never got a chance to see him again or get his name. He looked a great deal like Jimmy Carter. Several mentioned it to me later also.

[I will add this here: Benjamin and Elizabeth Hughes Shirley were the parents of Armand who married Robert Kay who were the great Aunt and Uncle of Jimmy Carter. Benjamin Shirley was b. ca. 1762. See Shirley News Apr 1979 issue page 6].

SPECIAL PROJECT UNVEILED at CONVENTION

1850 & 1880 CENSUS BOOKS

The 1850 census contains the names of over 2000 SHIRLEYS. The 1880 census lists over 4000. There are 102 pages in the 1850 book and 155 pages in the 1880 book. The books are hard cover and title printed in gold. Both books are INDEXED. I am attaching two pages from the book so you can see the layout. The first part of the book lists the states and the Shirleys under the county they lived during the census. The indexed portion in the back, lists the names alphabetically showing what county they lived in the census so you can turn to the first section and find them and those in their household and the other Shirleys living in the same county or adjoining county.

I have spent many hours cross matching the Shirleys and also matching the Shirleys from the 1850 census with the 1880 book and visa versa. It is neat to see how they moved from area to another.

I know there will be some errors in these books. I spent several years copying the names from the micro film at the libraries and archives.

The 1850 book is \$30.
The 1880 book is \$40.

Part of the money from the sale of these books will be paying for my trip to England. If you would like to order, please write me and enclose a check. Send to Betty Shirley % of the SHIRLEY NEWS 10256 Glencoe Dr. Cupertino California 95014. THANK YOU!

Obituary Notice

Vernon S. Madden died September 8, 1983. Vernon was a member of the Shirley Association and attended the South Carolina Convention. He was so interested in his family tree. He met several of his relatives while in South Carolina. I am pleased our convention brought him back to his roots before he left us.

His wife asked that I ask if there is anyone who loaned pictures or material to Vernon which has not been returned. She will attempt to locate them for return.

Vernon Madden descended from Benjamin and Elizabeth Hughes Shirley's son Nathaniel and Nancy Grubbs Shirley's son Benjamin (Bottom Ben)...see Cover of NEWS April 1982. Bottom Bens son Millard was Vernons grandfather.



VERNON MADDEN



BENJAMIN "BOTTOM BEN" SHIRLEY & WIFE CAROLYN LATIMER
[son of Benjamin and Eliz Hughes Shirley, see April
1982 NEWS...cover story].



MILLARD SHIRLEY, (son of Bottom Ben),
and Talulia Moorhead, 2nd wife.
[pictures seny by Vernon Madden]

ETTINGTON PARK

Last month I talked to John Shirley about our upcoming SHIRLEY CELEBRATION in England in 1986. He brought me up to date on the work that was being done on the manor. The gentleman who was remodeling Ettington into a Country Club went bankrupted and no work is being done now. The place is in bad shape according to John. However, he told me of new plans in the making. A few days later this newspaper clipping arrived from another source in England.

ETTINGTON MANOR MAY BE
LUXURY 60 BED HOTEL !

An adventurous and elaborate 3 million pound scheme to turn Ettington Manor, near Stratford, into a five star 60-bed hotel has been announced.

Plans which include demolishing part of the existing wings and outbuildings, constructing a swimming pool and new sewage treatment works, are now before the district council. If approved a June 1985 opening is planned.

"Everyone concerned wants to see the work proceed. If it is not done now the house will be derelict in a year's time and that will be a tragedy. Windows are already being broken", said Mr. Harrison.

Several attempts had been made in the past to run the manor as a hotel but these failed because insufficient money has been spent.

"It is in a pretty delapidated state at the moment and we are looking for grants from various bodies such as the Department of the Environment and the tourist board. We are confident we will succeed in bringing the manor up to the standard of a top class country house hotel", said Mr. Sullivan.

The manor was known by local people as "Dracula's Castle", but the proposals meant there would be several changes.

Although the main building will be undisturbed and the Victorian facade maintained, part of the wings will be rebuilt and a new 20 room block will be built at the rear.

When it opens as a hotel some 40 staff will be employed.

There has always been a house on the site since at least Norman times. The manor is owned by the SHIRLEY family-One of the oldest in Britain-who have been living in the area since at least the 14th century. The main building dates back to the back to the 15th and 16th centuries and the exterior is described as mid-Victorian.

After the war it became a hotel and there have been four tenants.

A fire broke out in August, 1980 which caused extensive damage to the central part of the property around the main hallway, dining room and bedrooms above. A second fire started later in the day and when the fire service returned they saturated the premises.

.

I am presently working on the arrangements for the trip. I will fly over to England to meet with John Shirley at his request to help make the plans for this CELEBRATION of 900 years of continual ownership of Ettington by the Shirley family. Another gentleman who conducts tours in England and is a genealogist will be researching the area of interest for our visits in addition to Ettington Park. There are several other Shirley locations. We'll have more on these plans in later issues of the NEWS this year. This gentleman also says he has the contacts with other professional genealogist both in England and in New York and they will assist us in connecting the early Va. and Md. Shirleys with those sailing from England.

Shirley Manor
at Ettington
Park in England
(rear view)



Manor house and Chapel
at Ettington Park in
England.

Chapel at
Ettington Park

[Photos from
Karen Shirley].



This would be terrific! He will assist us in our travel arrangements, publicity etc. I will be meeting with him in England also.

When I was studying my books on travel to England, I read about places of interest to visit by the regular tourist. If you haven't checked into the places to visit, let me suggest you go to the library or yourbook store and get a book on traveling in England. I'll mention a few of the main spots etc...

When we first arrive in England, I think we should continue from London right on over to Stratford so we won't have to check in a hotel for only one night and on to Stratford the next day. Stratford is only 4 miles from ETTINGTON PARK. IF the Shirley Manor has not completed their plans for a 60 bed hotel, we will stay in Stratford for about 3 or 4 days. This will give us a day to rest and take it easy before we hit the tourist trail. Those who feel like venturing out can see the town.

In Stratford is the Royal Shakespeare Theater. Tickets will be available.

Shakespearwas born in Stratford-Upon-Avon April 23, 1565. He is buried in the Holy Trinity Church. He died on his 52nd birthday in New Place. He spent much of his life in London where he became a leading figure of the Elizabethan theater. The world associates him with Stratford and thousands of tourists come to the area each year.

He married Anne Hathaway who lived in Shottery in a thatched farmhouse that is one of the most photographed houses in Britain.

Three miles from Stratford in Wilcomote is the farmhouse of his mother, Mary Arden.

There are gardens in these areas much like they were in Shakespears time.

We will most likely be staying here and traveling to Shirley Village and other places in the

area returning to Stratford in the late afternoon. On the last day of our visit to this area, we will have the SHIRLEY CELEBRATION at Ettington Park. The details of the celebration are in the planning stages now.

After the celebration, we will the next day return to London to visit the main points of interest...

Tower of London, [Walter Shirley, who came to America in 1726 was the grandson of Robert Shirley who was imprisoned and died in the Tower in 1656], Westminster Abbey, Buckingham Palace, British Museum, etc. etc.

Those who been to London and perhaps would wish to travel elsewhere could at this time continue on to Ireland or France, etc. This is one of the reasons for going directly to Stratford at the beginning of the trip.

I have had about 3 letters from teachers who pointed out they would find it difficult to go before school gets out. Good point. We may have to plan on June. The reason for May was to avoid the tourist. So we will consider making the change. We have to make sure there aren't any major festivals etc. that would interfere with our Celebration.

I think this gives you some insite on the 1986 trip. We will soon be asking for committments from you who are serious about going. It would appear we should plan on about 200 people. The number of people who have shown an interest has been in the hundreds.

ROBERT SHIRLEY b. 1629 England

Robert was the grandfather of Walter Shirley, Sr. [see May 1983 NEWS page 8 July 1979 page 3, Early Shirley lineages booklet, page 1].

On May 4, 1650 a warrent was issued from the Council of State to seize inventory and secure all estates, real and personal of Sir Robert Shirley, Bart, accused of high delinquency (taxes) and Robert was sent to the Tower of London as a prisoner. It appears his troubles began because he built the church at Staunton Harold, dedicated to the Holy Trinity which was against the declaration of Cromwell who forbade them to preach to any others than a member of their own family. They were not to perform any office of religion, or to use

the book of Common Prayer. During Sir Robert's time, many distressed devines used Staunton Harold as an asylum. This church was the only one built in England in those rebellious times. Oliver Cromwell and his Council ordered Sir Robert to fit out a ship since he could afford to build a church.

Sir Robert Shirley's early death which took place in the Tower of London on Nov 28, 1656 is suspicioned to have been a result of poison. He was at that time imprisoned for the 7th time because of religion and loyalty to King Charles the Second.

King Charles wrote a letter to Sir Robert's widow Oct 10, 1657 from Brussels about one year after Robert's death.

"It hath been my particular care of you that I have this long deferred to lament with you the great loss that you have sustained least instead of comforting I might further expose you to the will of those who will be glad of any occasion to do you further prejudice; but I am promised that this shall be put safely into your hands, thought it may not be so soon as I wish. I am willing you should know I bare a great part with you of your affliction, and whenever it shall be my power to make it lighter, you shall see I retain a very kind memory of your friend by the care I shall have of you and all his relations: and of this you may depend upon the word of your very affectionate friend."

Charles R.

=====

Shakespear wrote about Shirley in a couple of his plays.

The Shirleys also had a famous playwright, James Shirley b. 1596. [See Shirley NEWS Oct. 1981 page 4]. He wrote thirty one plays, more than any contempary except, Fletcher and Shakespear. His audience was confined more to the Royal Court and the elite who patronized the private playhouses.

====0=====

In Norfolk Co. Va. 1650/53 , Daniel Tanners will: To THOMAS SHIRLEY, all residue of my estate for the use of his child provided the child is named Daniel Shirley. Ex. Lemuel Mason and Thomas Shirley, overseer. (ref. Norfolk Co. Va. will Book C, page 66).

In Princess Ann Co. Va., REBECCA SHIRLEY, widow of John Shirley, purchased from Edward Trantor and wife, Eleanor, 100 acres in Parish of Elizabeth River, after her de-cease to devolve to their son John Shirley. On Dec. 10, 1709, Rebecca Price a bequest of clothing to Anne Shirley, under sixteen, daughter of John and Jane Shirley.

JOHN SHIRLEY of Princess Ann Co. Va. will of 1718 mentions wife Eleanor, son George Shirley, land he now lives on and mentions Mary Shirley, John Shirley of Prince George Co., Alice sometimes called Alice Nickolis. The plantation was willed to John Shirley by Josiah Mackie, to go to sons. Ex. Eleanor, George and John Shirley. (Josiah Mackie will, Nov 7 1716 or NORFOLK CO. VA. Minister, to JOHN SHIRLEY, SR. 150 acres in Princess Ann Co. Va. for indebtedness), ref. Princess Ann Co. Va. page 201, in Norfolk Co. Va. book 9 page 54.

DANIEL SHIRLEY, of Princess Anne Co Va. will, Oct. 1814: wife Mary Ann. Children: David, Jeanna Evans, Mary Shirley, Abby Shirley, land in Norfolk Co. Va. to three daughters and Sally Welborn. Refs. will book 3 page 125.

Abby (Abiah) Shirley b. ca. 1802 Norfolk Co. Va., died Jan 18, 1858 in North Carolina. Married William Swaim, well known editor of the "Greensboro Patriot". Their daughter Mary Jane married Dr. Algernon Sidney Porter. Their son was WILLIAM SIDNEY PORTER, "O. HENRY" the renowned short-story writer. Mr. Alphonso Smith who wrote the William Sidney Porter biography wrote that they descended from the Shirleys of Wiston for whom the Shirley Plantation named and that Daniel Shirley of Princess Anne Co. traced his family to the Shirley family of Wiston, in England.

On March 5, 1617/18 the Privy Council of England wrote to Lord Delaware the following: Whereas HENRY SHIRLEY, son of Sir Thomas Shirley, knight, is imprisoned in the Kings Bench for debt, hath made his escape, and it is thought, will attempt to transport himself to Virginia.

Lord Delaware West, husband of Caecilia, was the first Governor General of Virginia in 1609. He was instrumental in establishing "Hundreds", communities where they could have better protection against the indians. His was "Shirley Hundred" so named for his father-in-law, Sir Thomas Shirley, Knight. The property was along the James River between Jamestown and Richmond. In 1660 Edward Hill III purchased the "Shirley Hundred" (9,376 acres) in Charles Co. Va.

[Note: There was a HENRY SHIRLEY in James City County Virginia in 1642. Henry Walker was allowed a land grant on July 16, 1654 for Henry Shirleys transportation. In the early Va. records, many transactions were not recorded until years later. Is this the same Henry Shirley, brother of Caecilia?].

+ + + +

In 1668 ELIZABETH SHIRLEY married John Carter, Jr. in Gloucester Co. Va. He is from Lancaster Co. Va.

+ + + +

Elizabeth City Co. Va. 1656 is a THOMAS SHIRLEY. December 21, 1671 a Jury finds that Thomas Shirley died seized of 225 acres, 100 acres thereof granted unto Edward Hill, deceased, by patent Feb. 1, 1619, 50 more acres granted to Thomas Spilman and the other 75 acres waste land between the said patents all of which land was granted to Shirley at the General Court held at James City Co. Va. March 26, 1663 which 225 acres by reason Shirley hath no heir in the county/country nor disposed of the same by will or otherwise, death escheated. Vol.20 page 170.

Isle of Wright Co. Va. Court of Dec. 10, 1694: Mr. Henry Balser and Capt. Henry Tooker executors in trust of the last will and testament of RALPH SHIRLEY, deceased.

Surrey Co. VA. 1693, RALPH SHIRLEY died. No heirs.

+ + + + +

VIRGINIA HEADRIGHTS

1623 Daniel Shirley, Henrico Co. Va.
1636 Elizabeth, Accomack Co. Va.
1637 Agnes, Henrico Co. Va.
1643 Thomas, Norfolk Co. Va.
1662 Janes, Lancaster Co. Va.
1662 Samuel, New Kent Co. Va.
1663 Thomas, Elizabeth City Co. VA.
1664 Nicholas, Old Rappahannock Co.
(now, Richmond Co. Va.).
1664 Robert, Henrico Co. Va.

+ + + + +

MARYLAND HEADRIGHTS

1637 Francis Shirley
1667 James Shirley
1673 Daniel Shirley
1679 Joseph Shirley

+ + + + +

NORTHUMBERLAND CO., RICHMOND CO., WEST-MORELAND CO. VIRGINIA...

[Robert Shirley arrived in Maryland in 1633 on the "ARK & DOVE". Could this be the same Robert as found in Westmoreland Co. Va.?].

In Westmoreland Co. Va., Robert Shirley proved the will of C. Doyle in 1660. In 1663 there is a Thomas Shirley.

In 1690, Northumberland Co. Va. a Richard Shirley is found in the records. Thomas Shirley dies in 1696 Northumberland Co. Va. In 1689 George Shirley is found here too!

In Richmond Co. Va. in 1704 we find Thomas and Sarah Shirley on the quit rent list. In 1664 Nicholas Shirley is here. At that time this area was called "Rappahannock Co. Va."

St. Stephens Parish in Northumberland Co. Virginia is where the dates of Christenings and etc. were recorded for those Shirleys in Northumberland Co.

Thomas 1643 James City Co. Va.
 Thomas 1650 Norfolk Co. Va.
 Thomas 1663 Westmoreland Co. Va,
 Thomas 1671 Elizabeth City Co. Va.
 Thomas 1687 Northumberland Co. VA.
 Thomas 1696 Northumberland Co VA. (d)

Richard 1623 James City Co. Va.
 Richard 1673 York Co. Va.

Daniel 1619 arrived Va.
 Daniel 1633 Henrico Co. VA.
 Daniel 1663 Charles City Co. Va.

Edward 1636 James City Co. Va.

Henry 1642 James City Co. VA.
 Robert 1660 Westmoreland Co. Va.
 Robert 1664 Henrico Co. Va.

Nicholas 1664 Rapphanock Co. Va.

George 1689 Westmoreland Co. Va.

Samuel 1662 New Kent Co. VA.

John 1701 Prince Anne Co. Va.

In early Maryland records of St. Mary County we find a Richard Shirley who made a will in 1737. He names his sons, Richard, George William and John. Richard Jr. left a will in 1747 and named his son Robert.

Pvt. George Shirley died Aug 24, 1778 of the 3 Reg. of Maryland. Captain Michael McGuire was the commander of the 3rd Maryland line.

In Pennsylvania early records:
 Thomas 1743 Land warrent Lancaster Co.
 Lodowick 1751 " " Lancaster Co.
 Robert 1758 " " Bucks Co.
 Thomas, Jr. 1765 " Chester Co.

Glouchester Co. (now Delaware)
 James 1746 son of Mary Buckley

Kent Co. (now Kent Co. Delaware)
 Richard 1717/20 land warrent

Salem Co. (now New Jersey)
 J.A. Shirley witnessed will

=====

To subscribe to the SHIRLEY NEWS
 send a check for \$15 (4 issues of
 the NEWS) to: SHIRLEY NEWS
 10256 Glencoe Dr.
 Cupertino, Ca. 95014
 Phone: (408) 255-8511

JOHN & WILLIAM SHIRLEY
 OF BEDFORD CO. PA.

John and William Shirley were in Captain Moses Chaplin Company of 1767, Liber, "Colonial Muster and pay rolls"..Folio 197, 199.
 (The Chaplins were a prominent family in Washington Co. Maryland)
 [From Hall of records Annapolis, Md].

Assessment of 1783 Lower Antietam,
 Washington Co. Maryland...

WILLIAM SHIRLEY p.40

JOHN SHIRLEY p. 36

GEORGE SHIRLEY p. 36

=====0=====

[Material from Gerald Finn].

=====

PETER SHIRLEY b. ca. 1750's lived in Washington Co. Maryland in 1785.
 [1794 a Peter Shirley in Bedford Co. Pa...400 acres. No other mention of him].

KNOWN CHILDREN

1. Balser (no information)
2. Mary "Polly"
3. Christian b. Feb 12, 1773 Maryland [See July 1982 NEWS page 4].
4. Johnathon b. Oct 1774 Maryland drowned fording the Wabash River in Vigo Co. Indiana.
 m. 1st Nancy Reif
 m. 2nd Esther Swope
 Children by Nancy

- A. Daniel b. Aug 15, 1801 Va d. 1886 in Vigo Co. Indiana
 m. Elizabeth Funkhouser 1824 in Augusta Co. Virginia.
- B. Jacob b. April 18, 1804 Va. d. 1847 of Cholera on a trip down the Ohio River and is buried in Louisville, Kentucky. m. Mary Mullen.
 Children by Esther
- C. George b. Nov. 23, 1816 Va. d 1899 Vermillion Co. Indiana.
 m. 1st Susan Hanger
 m. 2nd Margaret James July 1869
- D. William b. ca. 1827
 m. Frances
- E. Evaline b. ca. 1830 m. Mr. Walton
- F. Peter b. ca. 1832
- G. Fanny m. Strouder Sheets
- H. Sarah m. Harvey Bryan
- I. Susannah m. Wm. McFall 1843

[Material from Joseph Northrop & Henry Rothrock].